

# Minute! Virtual Workbench Install Manual

2017.May.28  
Revision 2  
Division Engineering

## Table Of Contents

Table Of Contents .....	1
Environment .....	1
Install Prerequisite.....	1
Install.....	1
Uninstall.....	6
Contact.....	6

## Environment

- **Minute! License Client 1.0.1.15 or higher is already installed.**
- **GPU Card supports DirectX 11 or OpenGL 3**
- OS:Windows7 64bit Service Pack1 /Windows8.1 64bit/Windows10 64bit
- Memory:8GB higher
- Account Privilege : Having administrator privilege
- Account name character : Using only Ascii character. Don't contains empty character.

## Install Prerequisite

1. Stop below programs before installing:

- Minute! related programs

## Install

- Double-click install program to spawn the installation process.

Ex. Program name :

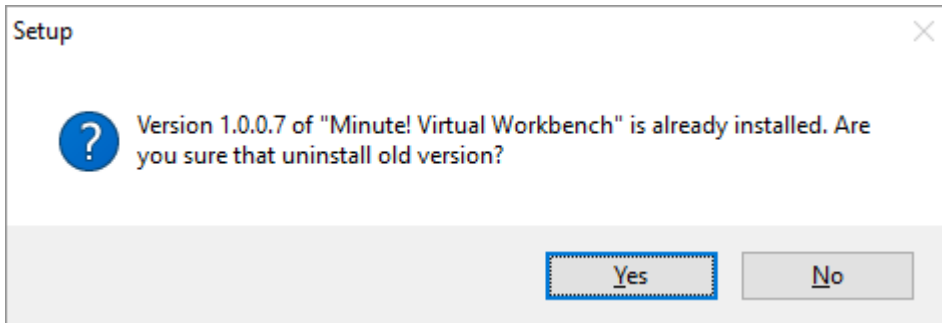
*Minute! Virtual Workbench\_1.0.0.7.exe*

**Note:**

You may get a security warning from Windows to run this file.

**Note**

If this Installer detects old version as follows, you click the “Yes” button.

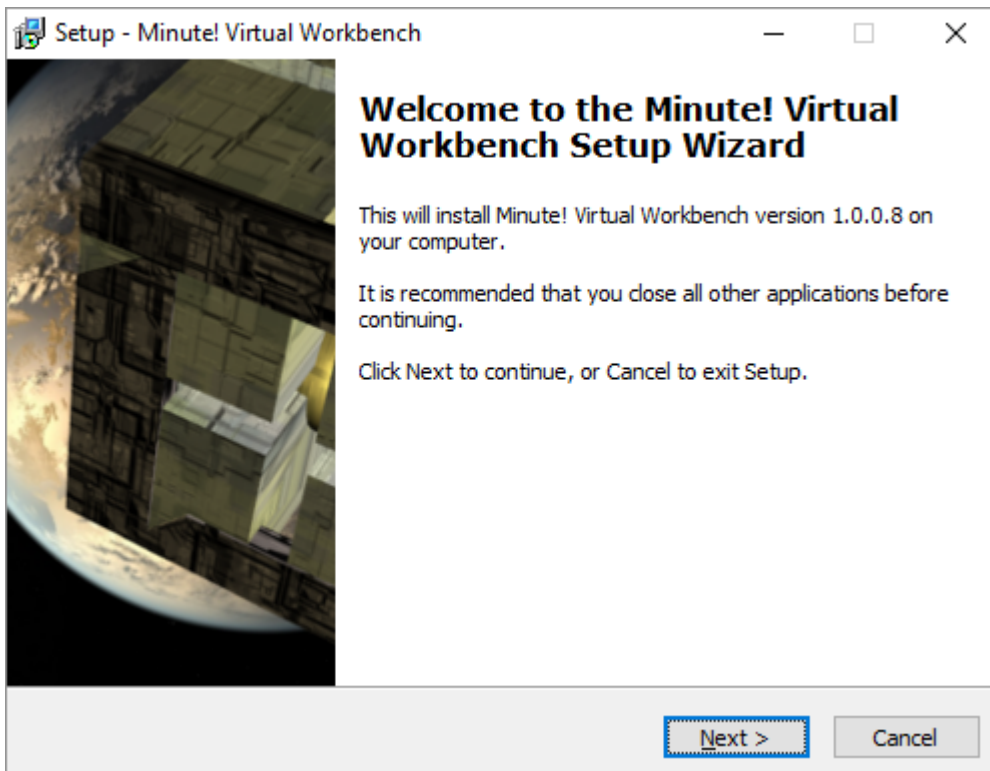


**Note**

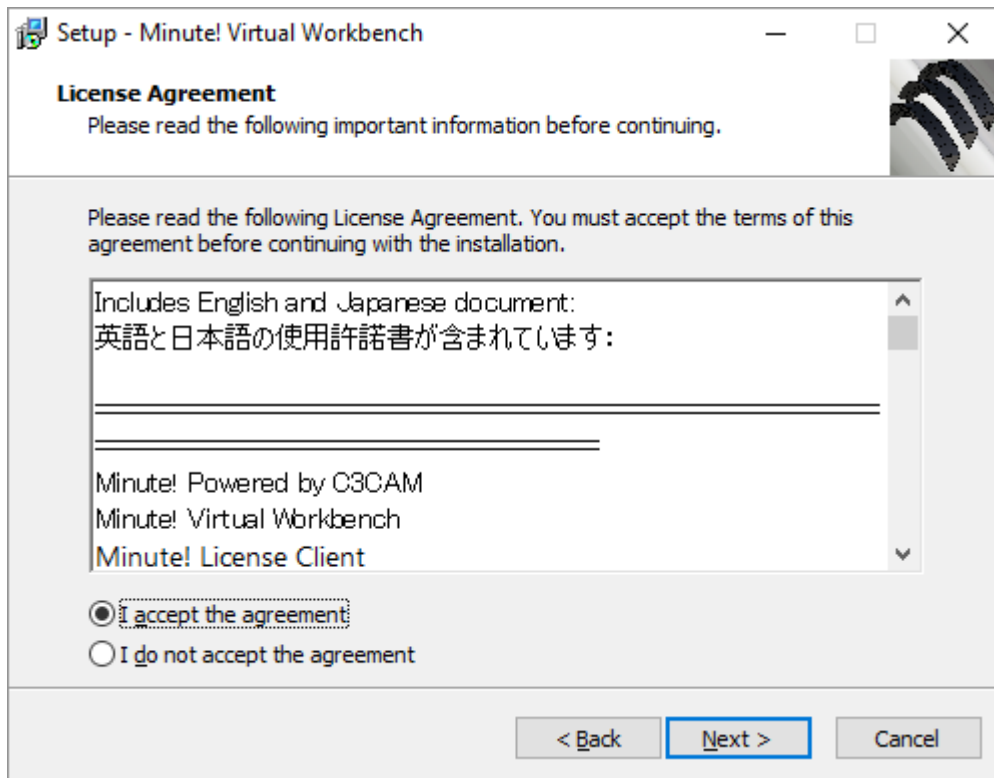
If this Installer detects the same version, installation is stopped.

And then, follow the on-screen instructions. Installation is straightforward.

- Click the “Next” button to start.



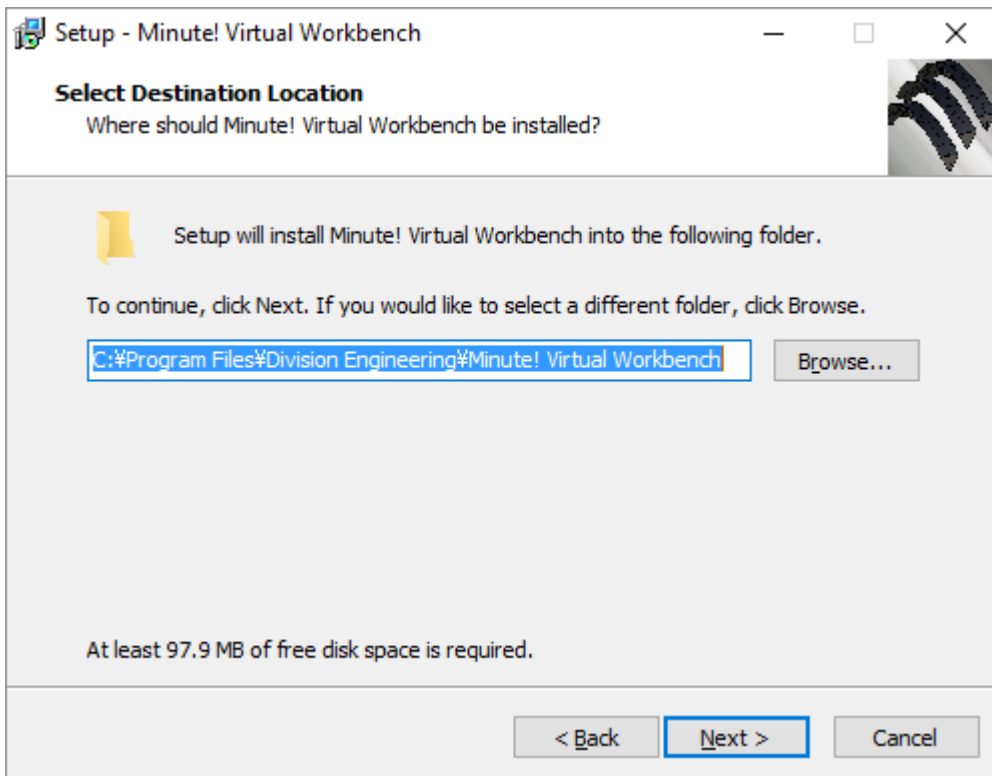
- This Dialog includes End User License Agreement. Both English and Japanese. If you confirm it, Click the “I accept the agreement”. And then, Click the “Next” button.



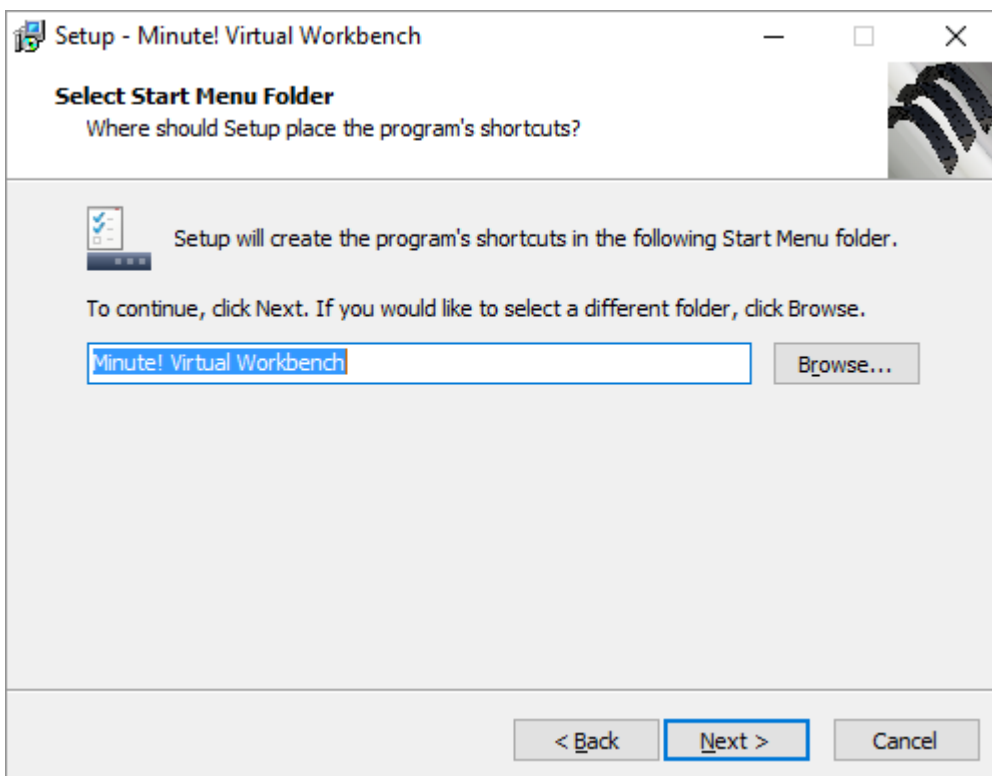
- Select your installation folder if you want to change. After click the “Next” button.

Default install folder will be :

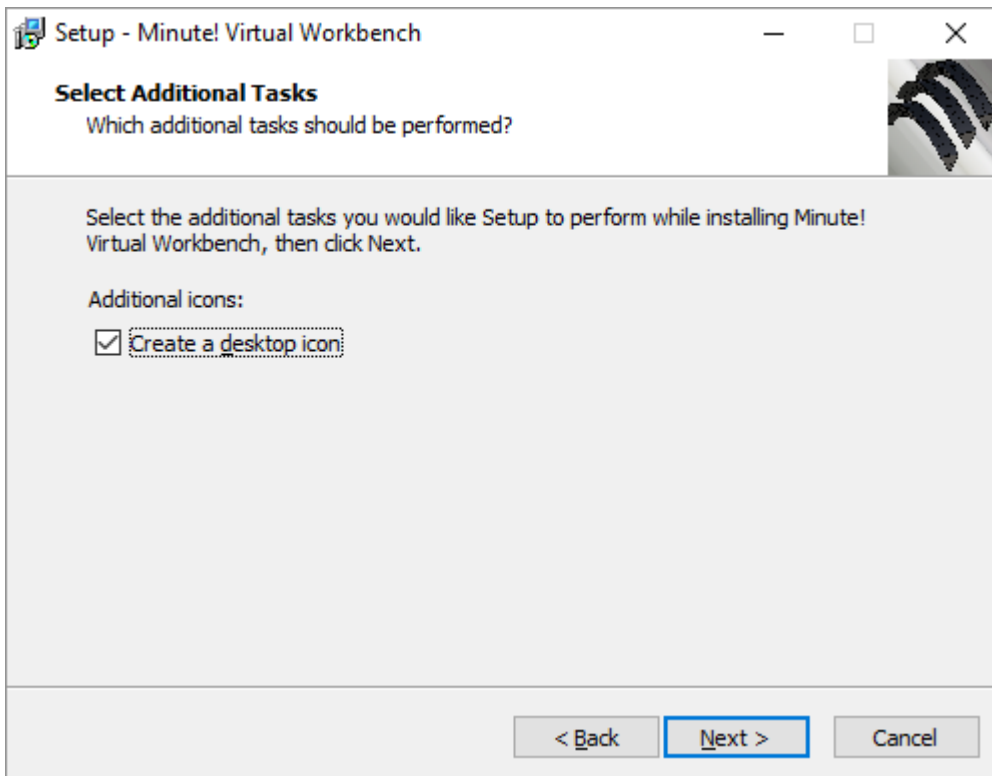
*C:\Program Files\Division Engineering\Minute! Virtual Workbench*



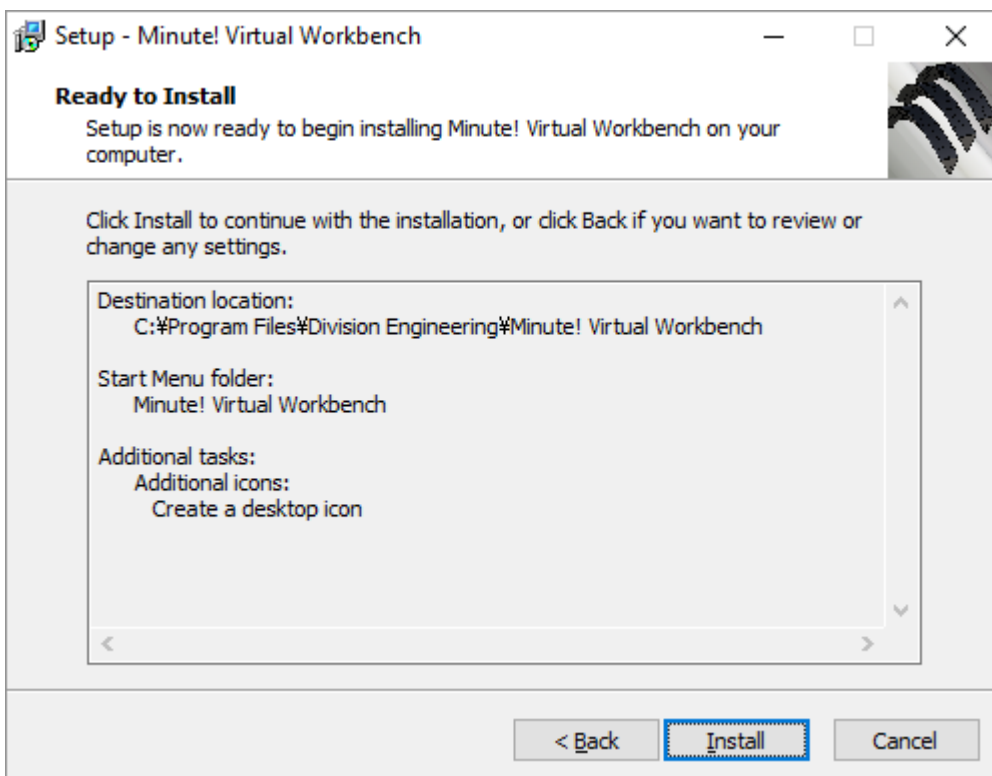
- Then, Click the “Next” Button.



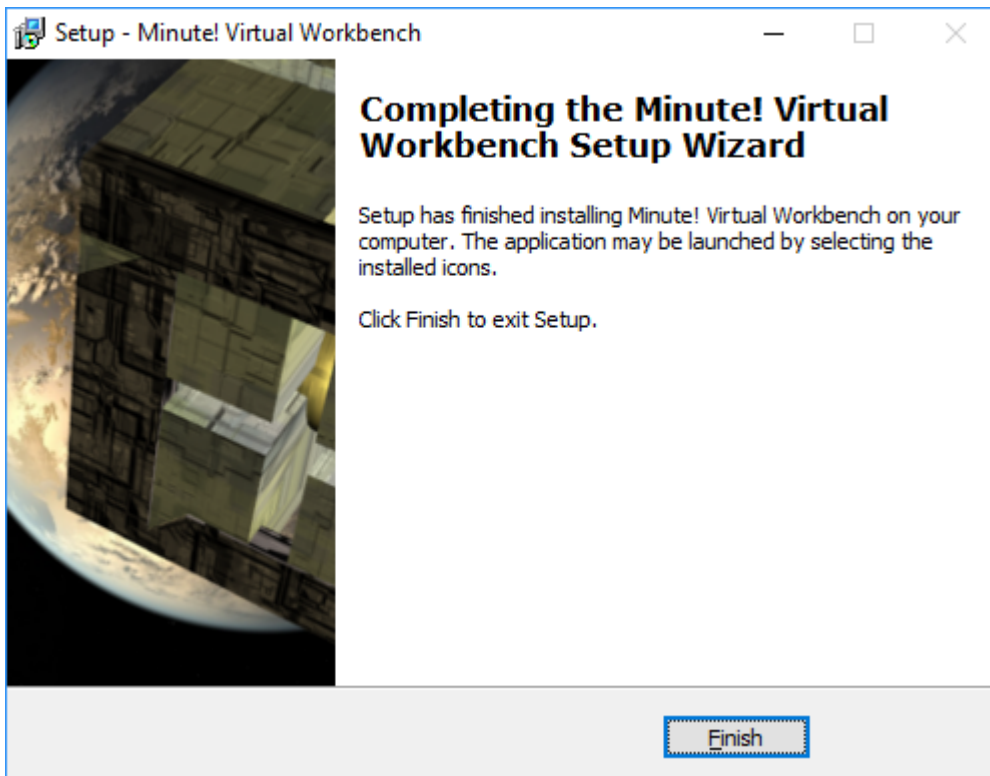
- Then, Click the “Next” Button.



- Click "Install" button to begin installation.



- Finally, Click the "Finish" Button.



## Uninstall

• Select “Programs and Features” in your control panel. Double Click “Minute! Virtual Workbench version a.b.c.d”(“a”, “b”, “c” and “d” are numeric character). And then, uninstall process is started.

### Note:

Below program or folder is not uninstalled automatically.

- % USERPROFILE %\Documents\MinuteVWorkbench

## Contact

EMAIL : [info@division-engineering.com](mailto:info@division-engineering.com)